
ATSU Core Professional Attributes (CPAs): Closing the loop



Presented 09.21.2021 in partnership with
the University Wide Assessment Committee (UWAC)



Today's Agenda

- Introductions
- What are the CPAs?
- CPA mapping
- Panel Discussion
- CPA results
- Q&A

Introductions

Panelists:

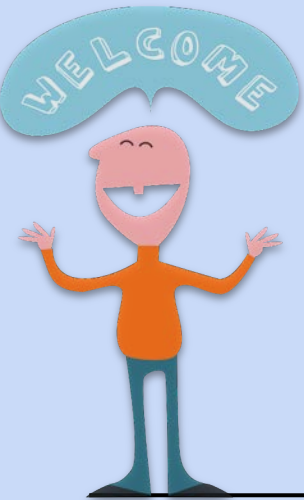
Beth Thompson, Analyst Academic Computing, CGHS

Linda Brozewicz, Data/Assessment Manager, ASHS

Valerie Hamlin, Coordinator Medical Education, KCOM

Jordan Farris, University Assessment Project Manager, OAA

Facilitator: Forrest Bollow, Director of OAA



And a big shout-out to any of our IMAP Liaisons in attendance today!



Zoom Poll



CPAs...What are they?

Critical Thinking

Finding, appraising and applying evidence in conjunction with best practice in the process of healthcare decision making.

Cultural Proficiency

Valuing differences, respecting others and demonstrating behavior that enables effective interactions in all situations.

Interpersonal Skills

Communicating and interacting successfully with patients, families, colleagues and other professionals in the healthcare delivery process.

Interprofessional Collaboration

Working effectively on an interprofessional team to deliver high quality whole person healthcare and improve health outcomes.

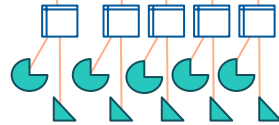
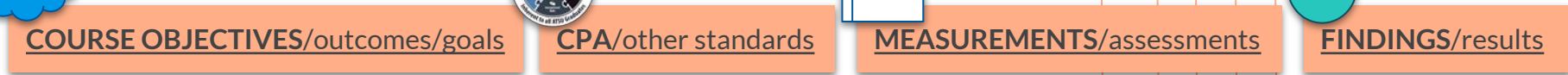
Social Responsibility

Engaging in initiatives and activities that positively impact the health and wellbeing of the individuals, communities and professions served.

[Click here to read more!](#)

How do we know our graduates exemplify the CPAs?

We marry the existing **Curricular Mapping** with the goals and tools of our **Institutional Mapping**.



Institutional Assessment of the CPAs at Formative Level

REVIEW: Instructors and program administrators may review results and determine whether student performance is sufficient or not. The University-wide Assessment Committee will use Taskstream reports to assess institutional-level success in strengthening the CPAs (HLC reporting also requires this information).

REPORTS: An assessment plan/mapping report can demonstrate student mastery of the CPAs at the course, programmatic, and/or institutional level.

FINDINGS: Measurements/assessments produce results indicating the strength of the CPA learning outcomes. At the institutional level, a selective sampling of CPA findings are entered into Taskstream as the % of students in a class who have met and not met expectations.



OBJECTIVES: Each course syllabus must list objectives/outcomes/goals/competencies describing what the student will learn and accomplish. These course objectives must be entered into Taskstream. (NOTE- Taskstream system uses the word ‘outcomes’.)

ATTRIBUTES (CPAs): For each objective assigned to a course, the instructor/course designer must determine which, if any, objectives align to a CPA. If an objective is mapped to a CPA, it must be noted in the course syllabus and entered into Taskstream.

MEASUREMENTS: If an objective is mapped to a CPA, then the instructor/course designer must determine the measurement/assessment method listed in the syllabus that is being used to evaluate CPA learning and enter it into Taskstream.



YEAR ONE

sr

YEAR TWO

ct

cp

YEAR THREE

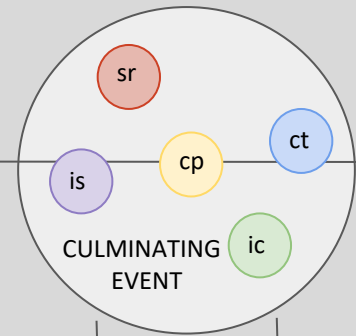
is

ic

YEAR FOUR

Note: This is simply one example of institutional mapping. Can have many more attributes in one year.

85% of students passed the measure



100% of students passed the measure

FOUR YEAR PROGRAM w/ ONE CULMINATING EVENT

- ct = Critical Thinking
- cp = Cultural Proficiency
- sr = Social Responsibility
- is = Interpersonal Skills
- ic = Interprofessional Collaboration

The image features two stylized human figures at the bottom, each with a circular head and a trapezoidal body. A large, dark blue speech bubble with a thick outline is positioned between them, containing the text. The background is a solid blue color with two horizontal white lines, one above and one below the central text area.

**Let's walk through the first
four steps of mapping with
our Panelists.**

CPA results

Critical Thinking

92% formative
95% summative

Cultural Proficiency

90% formative
90% summative

Interpersonal Skills

93% formative
93% summative

Interprofessional Collaboration

94% formative
93% summative

Schools/Colleges/Programs determine the measurement(s) and determine where to set the level for successful completion of a measurement(s).

The University set a goal that 85% of students passed the measurement for the formative assessment of CPAs, and 100% of students passed the measurement for the summative assessment.

Social Responsibility

92% formative
93% summative

Also, more than one CPA can be mapped to a single measurement

What's next for CPAs at ATSU?



- Analyzing findings (step 6 on slide 7 graphic)
- Continue collection of steps 1-4 in AY 2021-2022
- HLC 4 year report
- Quality Initiative Project 2023

Q&A

